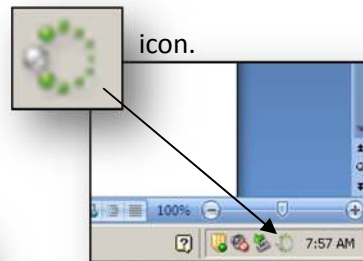


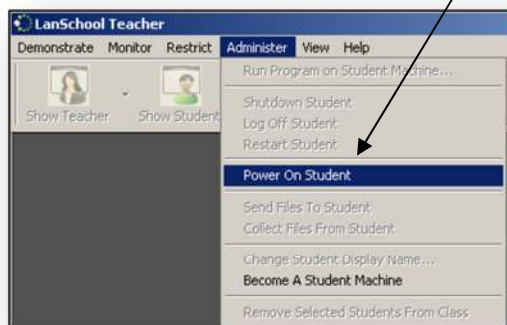
Starting and Logging in Computers with LanSchool

1. Log into the computer.
*If you log in as yourself, you can log out at the end of your session. Lanschool will continue to run.

2. In the bottom right corner of the screen, click the circle

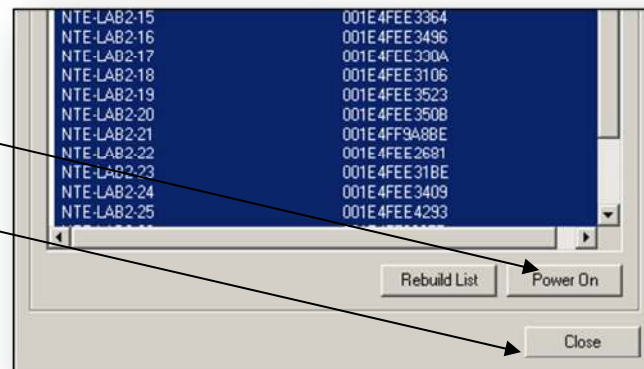


3. Under the Administer Tab, Choose Power On Student.



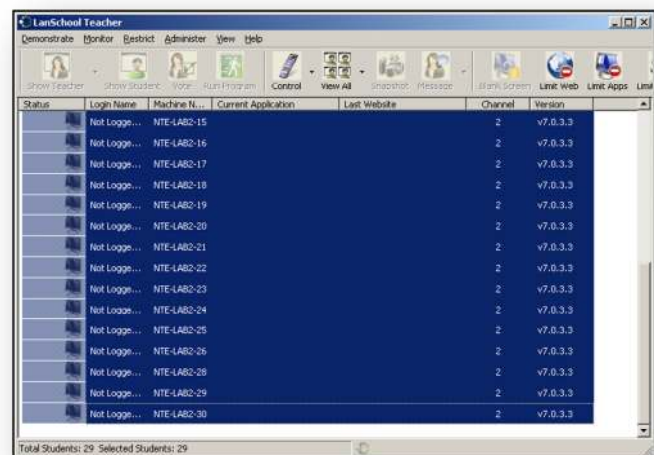
4. Click Power On.

5. Click Close.



6. It may take a few minutes for Lanschool to "Discover" the student computers after they power on.

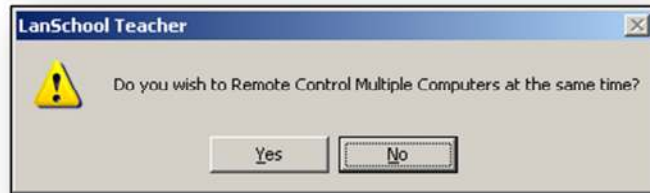
7. Once the computer list appears, click on the first computer that is Not Logged In.
8. Hold the Shift key.
9. Scroll down and click the last computer name to select all in the list.



10. Under the Monitor tab, choose Remote Control Student.

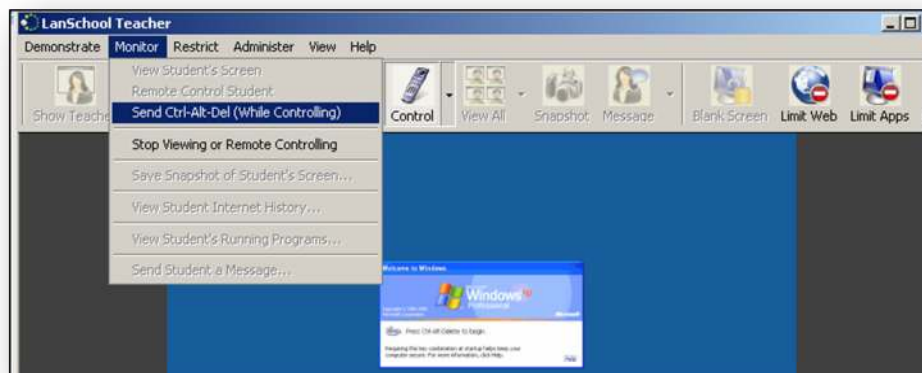


11. Click Yes.



12. When the login screen appears, you **CAN'T** CLICK Control-Alt-Delete on the keyboard!

13. Under the Monitor tab, choose Send Ctrl-Alt-Del (While Controlling).



14. DO NOT USE THE MOUSE. Use the keyboard to do the following steps.

- Click Enter.
- Type your lab username. (There will be some lag time before it appears.)
- Click Tab.
- Type the lab password. (There will be some lag time before it appears.)
- Click Enter.

15. Under Monitor, choose Stop Viewing or Remote Controlling.

